



INFINITY

IAS Infinity Architectural Suspended

Linear architectural line

Features and Specifications

Construction:

- Mitered edge eliminates end cap seam creating a perfectly smooth edge and clean finish
- Extruded aluminum suspended fixture
- Cable hangers are moveable along the length of the fixture
- Customize your design with any angle
- Plug-and-play wiring for continuous runs
- Frosted acrylic diffuser offers high light transmission of over 85%
- Multi-Color Tuning LED board arrays – Field selectable 3000K, 3500K, or 4000K
- Endless geometric shapes (ex: triangles hexagons, octagons, etc.)

Listing & Ratings:

- All electrical components are U.L. listed or recognized
- All fixtures are U.L. Certified and Union made in the USA
- Meets Buy America Act (ARRA)

Driver:

- Universal voltage 120-277V, 0-10V dimming to 1% standard
- Custom driver tuning available for specific lumen requirements
- Lutron dimming optional

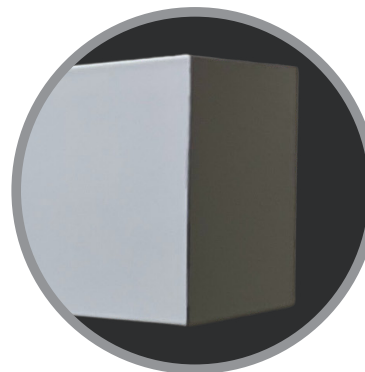
Warranty:

- 5 years - part replacement only (see our terms & conditions page at www.lamarled.com for details)

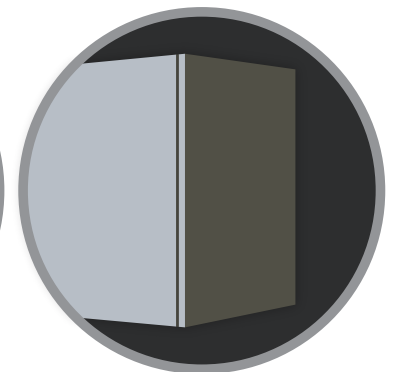


Our edge is that we have no seam

Lamar LED's mitered edge vs. everyone else's end cap



Lamar LED'S
Infinity edge



Standard extrusion
end cap



Ordering Guide / Example

IAS-48-M-MCT

IAS - Suspended Module

Series	Length	Width	Power	CCT	General Options
IAS	24 = 2' nominal 48 = 4' nominal 72 = 6' nominal 96 = 8' nominal CS = custom shape CA = custom angle	2 = 2.5"	L = Low M = Medium H = High	MCT = Field Selectable CCT 3000K, 3500K or 4000K TW = Tuneable White 2700K-6500K (Min Qty Applies)	DTD = 0-10V Dim to Dark 90 = 90 CRI BLK = Black metal construction AC6 = 6ft adjustable aircraft cable kit AC8 = 8ft adjustable aircraft cable kit AC10 = 10ft adjustable aircraft cable kit

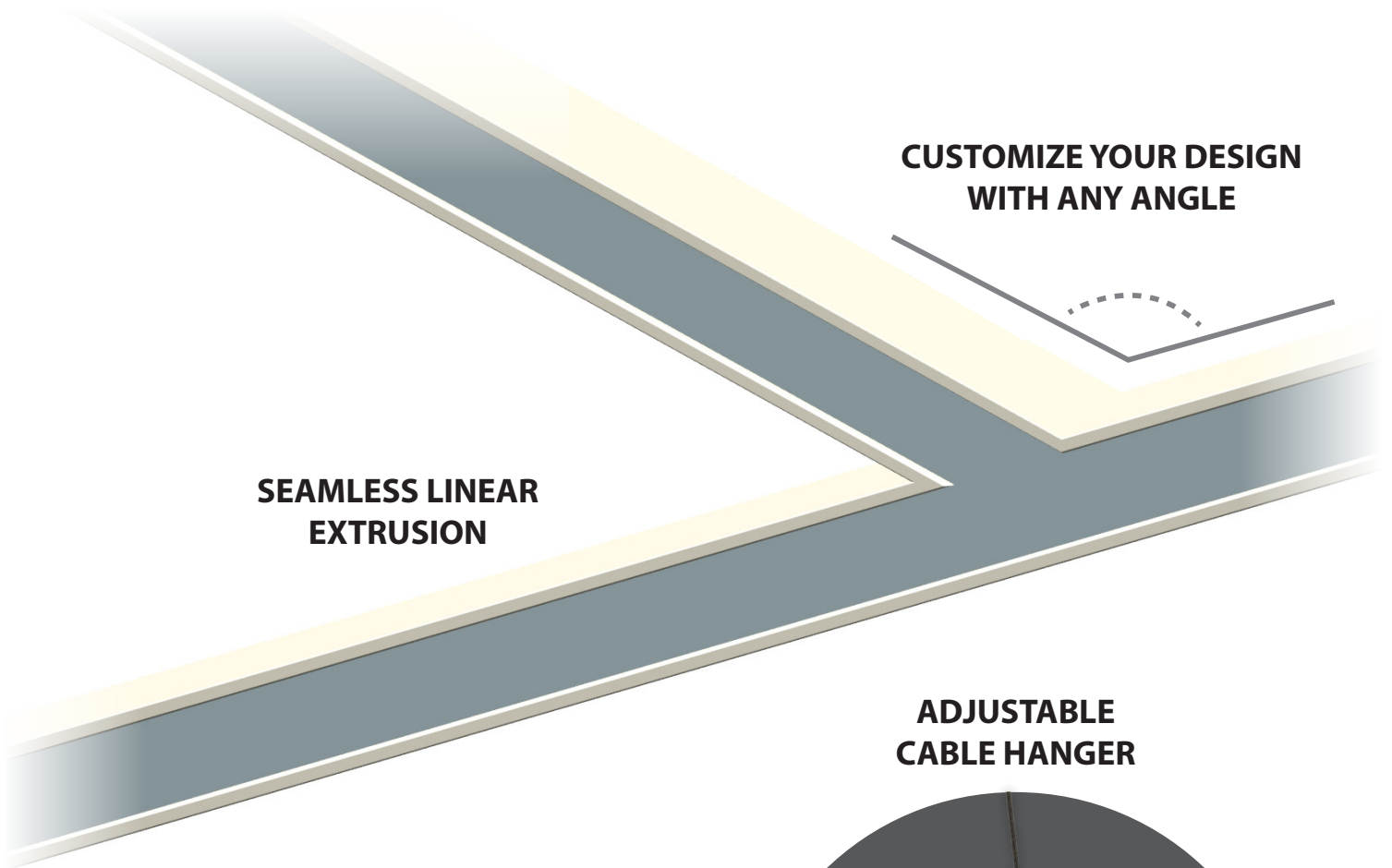
4ft AC cable kits and pre-wired power drop included as standard, other lengths available

Specifications subject to change without notice - Rev 0722



INFINITY

IAS Infinity Architectural Suspended Linear architectural line



**CUSTOMIZE YOUR DESIGN
WITH ANY ANGLE**

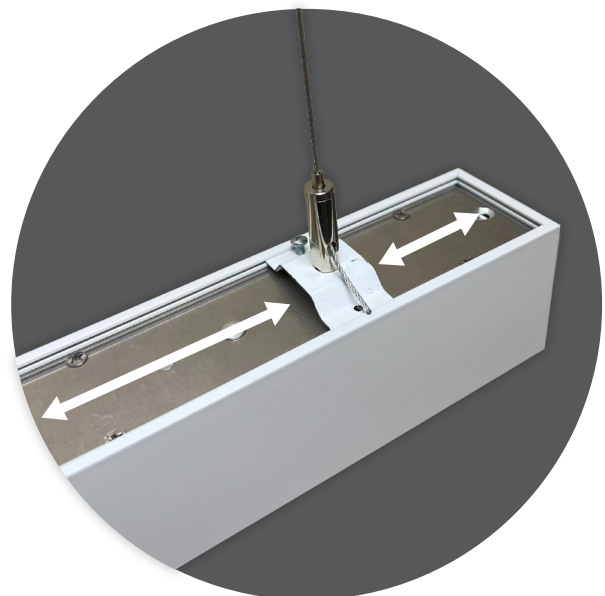
**SEAMLESS LINEAR
EXTRUSION**

**ADJUSTABLE
CABLE HANGER**

Performance per Linear Foot at 4000K

Nominal Lumen Output	Input Watts*	Efficacy
400 lm/ft	3.6 W/ft	110 lm/W
500 lm/ft	4.6 W/ft	109 lm/W
750 lm/ft	7.0 W/ft	106 lm/W

* Based on a 4 foot luminaire using one driver
Please consult factory for custom lumen output and wattage.



Specifications subject to change without notice - Rev 0722